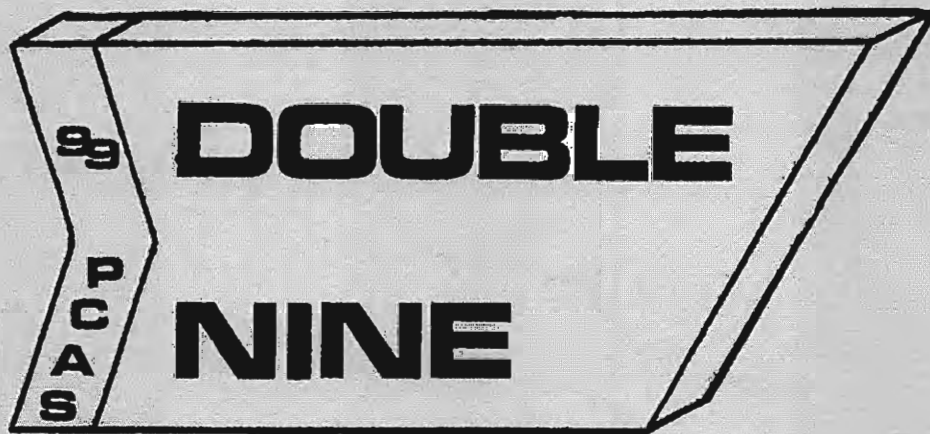
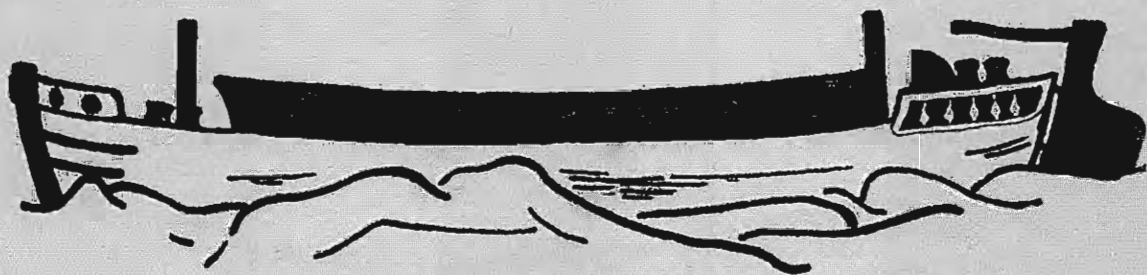


No. 18



QUARTERLY MAGAZINE
OF

The Pocklington Canal
Amenity Society



JUNE 1973

The Pocklington Canal Amenity Society



Registered Charity 500637

PATRONS--

THE EARL OF HALIFAX, J.P.,
H.M. LIEUT. YORKS. E.R.
SIR PAUL BRYAN, D.S.O., M.C., M.P.
ALEX LYON, M.P.
PATRICK WALL, M.C., V.R.D., M.P.
CLLR. T. E. SCAIFE, J.P., F.S.V.A.
J. CHICHESTER CONSTABLE, ESQ.
B. ALLISON, ESQ.

COMMITTEE

Chairman E.A. LOUNT Thornton Lodge, Thornton
Melbourne, York 'Phone: Mel. 216
Vice-Chairman F.H. LOFT, 10, Regent St. Pocklington
York. 'Phone Pocklington 3100
Secretary MRS. S.M. NIX, 74 Westminster Road,
York, YO3 6LY 'Phone: York 23338
Assistant Secretary MRS. M.O'KELLY, 15 Chapmangate,
Pocklington, 'Phone: 2687
Treasurer D.G. Tomlinson, MOD Police,
Nate FSS Collafirth Hill, Hillswick,
Shetland (also via Secretary or Chairman)
Membership R.G. WALTON, Hawthorne Cottage,
Flinton, Sproatley, E. Yorks.
Working Party D. DUKE, Mill House Farm, Thornton,
Melbourne, York. 'Phone: Melbourne 378
'99' Editor MRS. S.M. NIX, (see above) or
contact the Chairman.

- and -

H.D.R. GREEN, J.R. JEFFERY, B. LATHAM, R. O'KELLY,
F.E. STEELS, R.E. TRIFFIT, R.C. WHITE:

Hon. Auditors PICKLES & CO., CHART. ACCTS. SELBY

Hon. Consulting
Engineer.

C.T.G. BOUCHER, Ph. D. MSc.,
M.I. Struct. E., A.R.I.B.A.

£12,000 GRANT CONFIRMED BY ERCC TO BWB

Cheering news reached us on the eve of going to press with the March issue of "99", that the East Riding County Council had approved the long awaited grant to British Waterways Board towards the Canal restoration. We subsequently learned that they have agreed with BWB to reimburse them to the extent of £12,000: towards the cost of dredging the lower reaches, restoring Gardham Lock (though not the swing bridge over the lock) and re-gating Thornton Lock, during the current financial year. Regrettably the County Council do not commit their successors in the new Humberside Council to making the two further £12,000 annual payments originally planned and agreed with BWB and this Society.

Gill Silt

BWB'S CONTRIBUTION

BWB Area Engineer, Ian Walker, has worked tirelessly on behalf of the scheme and we understand that BW themselves are contributing in the region of £26,000 this financial year. Mr. Walker expects to begin dredging in late June or early July, to start work on Gardham Lock in January 1974, and on Thornton Lock in April, 1974.

SPORTS COUNCIL TO CONTRIBUTE

We are delighted that the Sports Council are expected to make a generous contribution to the ERCC's initial £12,000 grant this year and again, next year, to the new Humberside Council. This ensures some of the continuity sought by PCAS and BWB in their original three-year phased scheme.

THE SOCIETY'S USEFUL PART

The Society itself, having contributed financially to Cottingwath Lock, are now in a position to assist substantially in the current scheme. This is in addition to the sizeable amount of money saved by three years of voluntary work and free loan of plant and equipment (detailed elsewhere). The Inland Waterways Association also have indicated their intention to contribute at some stage.

MORE LOCAL AUTHORITY HELP STILL NEEDED

All this is most encouraging, but it is not enough to restore the Canal fully as this Society has always proposed (as also did the Planning Authorities). Speaking at the Society's Annual General Meeting on March 31st, Mr. John Dodwell, General Secretary of the Inland Waterways Association, said he hoped that re-organisation of local government would not mean a slowing down of restoration. "Further delay means more decay!" he declared. We were grateful to the County Council for their £12,000 but more local authority money was certainly needed. He earnestly hoped that new Humberside Councillors would vote us continuing support. "After all", said Mr. Dodwell, "the ratepayers will benefit, and people from outside will enjoy the Canal and will bring trade to the area when visiting." He also urged that all monies be wisely spent with all possible use of volunteer labour including, for example, Borstals.

APPEAL TO NEW HUMBERSIDE AUTHORITY

All Society members and, indeed, all who enjoy the countryside will echo John Dodwell's concern. The alternative to restoration is slow but certain decay. We must all make every effort to ensure that the support begun by East Riding County Council is generously continued by our new Humberside authority.

PCAS TOO NEEDS MONEY TO CONTINUE VITAL ROLE

Note! The ERCC and Sports Council grants go direct to British Waterways for their restoration work, not to the Canal Society! PCAS has had no money from the County Council - only a much-appreciated annual £25 from Pocklington RDC. It was the Society who initiated the restoration scheme, in 1969, who has campaigned tirelessly for it since, and who will continue to play an important role in embellishing and safeguarding the Canal's amenity value to the community in the future. This all costs money! We are entirely dependant on our members and on the usual money-raising activities.

CANALS FOR COMMERCE - COMMON MARKET PRIORITIES

Holland boasts a Minister of "Waterways and Transport". Note their priorities! All over Europe Canals are thriving big business. And they take a huge bulk of traffic off the roads. Yet when the British Government discuss an Integrated Transport Policy they scarcely even mention Canals! They should look to the Common Market on this one.

And they should quickly find the £2.4 million to MODERNISE the SHEFFIELD AND S. YORKSHIRE CANAL. BWB'S scheme here could mean 700-ton barges carrying goods which would otherwise need 35 20-ton lorries on the grossly overcrowded roads between S. Yorkshire and Humberside.

PLANT A TREE IN 73!

BIELBY ARM FOR UNIVERSITY STUDY OF WILD LIFE. BWB have agreed to Bielby Arm being used by York University for the study of wild life in undisturbed surroundings.

NATURE TRAILS BY THE WATERWAYS. Send to BWB, Melbury House, Lodon NW1 6JX, for detailed list of at least thirteen of these around the country. Nearest at Keighley, Leeds/Liverpool Canal (Details: Keighley Art Gallery).



- 4 -

CASH VALUE OF VOLUNTARY HELP AND LOAN OF PLANT

Mr. Bill Parker has recently made a fairly detailed estimate of the cash value of hours worked and plant loaned at Working Parties over the past three years on the Canal. The work force was deliberately rated on the low side, to offset the very young and the gongoozlers. Plant hire at prevailing commercial rates was estimated, covering all the equipment loaned to us. The grand total of around £6,000 was agreed by Mr. Ian Walker to be a fair estimate, if anything on the low side. This is quite apart from the cash raised by the Society - £500 already put to Cottingwith Lock and a further sum to assist future restoration, (these sums being over and above normal Society running expenses).

Items of work done include tree felling and uprooting, removal of trees from water, and disposal of trees; lock clearance at Thornton and Gardham, clearance of lock surrounds at Cottingwith and elsewhere; lock gate removal, repairs to brickwork on locks, bridges and towpaths; removal of old lock machinery; removal of two submerged lighters from the Canal. Also painting, tarring and provision of mooring posts.

Tractors alone would have cost £810 if hired commercially. Water pumps, power saws, trucks, a cement mixer, hoist and 'slurry slave' are amongst other items loaned over the years.

BW have said that, following their major restoration works, they will be calling on the Society to undertake the necessary landscaping on the restored Canal. This will easily double the Society's contribution and will certainly generate still further enthusiasm.

Mr. Parker's figures came at a most appropriate time in our discussions and the Society are once again in his debt. The members and friends who made all this possible also deserve our best thanks.



APOLLO CANAL CRUISES

14, IVY ROAD . SHIPLEY . YORKSHIRE
Tel: Shipley 52582 BD 18 4JY

CANAL AND RIVER CRUISES

DAY, HALF-DAY, AND EVENING CRUISES ABOARD PASSENGER NARROWBOATS "APOLLO" (48 seats) and "ACHILLES" (50 seats), from the following starting points:

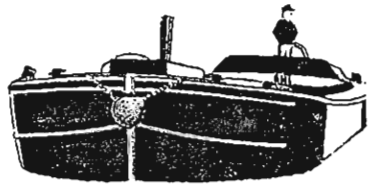
- LEEDS & LIVERPOOL CANAL: Shipley, Keighley, & Barrowford (Nr.Colne).
- CALDER & HEBBLE NAVIGATION: Brighouse.
- SHEFFIELD & SOUTH YORKS. NAVIGATION: Mexborough and Sheffield.

Facilities include comfortable upholstered seating, heating and weather protection, fully licensed Bar, light meals and hot snacks to order, commentary/music, toilet etc.

The ideal party outing for staff, school, institute, church or club!! PUBLIC TRIPS at Bank Holiday weekends, and at IWA Rallies. Further information in 1973 Brochure - now available.

ALSO: CAMPING CRUISES for up to twelve persons on Leeds & Liverpool "Short" Boats. Steerer provided. Ideal for schools, youth clubs, Scouts etc.

ALSO: CANAL TRANSPORT on Leeds & Liverpool Canal, and other Northern Waterways.



Passenger and camping boat operators - canal carriers
Members of the Association of pleasure craft operators
and the Inland Waterways Association



WORKING PARTIES

WORKING PARTIES - MARCH 31st/APRIL 1st APRIL 28th/29th

Enjoyable and enthusiastic Working Parties on both occasions. Fifteen each day on the first one, slightly less on the second. Brickwork on Walbut Bridge was repaired and repointed by some of the volunteers on April 1st (no fooling!). Both weekends saw steady improvement to the brickwork at Cemetery Lane Landing; several massive coping stones were successfully lifted out of retirement and put back where they belong, and the landing repairs are now very nearly complete..... Not without a few adventures though!

One reads about the perils of ferrying the old-time towhorses across the Derwent in their own barges. What a pity none of our cine experts were on hand to record the capers of sundry stalwart volunteers as they endeavoured to board the Society raft to be hauled across from the off-bank to the safety of the Cemetery Lane shore! Who said it looks very narrow here? They can't have tried it by raft! Still, everyone crossed safely in the end. Of course, they all know BW regulations expressly forbid bathing in the cut, so they could hardly do otherwise, really, could they? Or could they?? One of them must have forgotten about the regulations that time under Church Bridge

A SUGGESTION - It has been suggested that, in addition to tidying up the railings at the bottom of Cemetery Lane, we might consider putting a seat there when the work is finished. Some of you who cannot help in other ways might perhaps like to contribute to something like this. The Treasurer would be happy to receive any contributions.

THOSE NEGLECTED SUBSCRIPTION RENEWALS!

Have you a member friend who puts off posting his overdue sub?? Would he - or she - be glad for you to collect it and bring it along??

WATERWAYS SCENE DOWN UNDER - OAMARU NEW ZEALAND

Our members Daphne and Neil Robertson continue to keep the PCAS flag flying at Camaru, North Otago, New Zealand - despite a two-month time-lag in receiving their magazines etc., In answer to a recent query they sent us the following account.

'....you asked if we had any waterways in our country - no, not like you have. There is a lot of pleasure boating done on our lakes, both natural and man-made. We have three large lakes up the Waitaku River close to where we live.

One of the dams, Benmore, is the largest earth dam in the Southern Hemisphere. For those who might understand figures the base measurements are: base width 1,600 ft. tapering to a crest width 75 ft., crest length 2,700 ft., structural height 360 ft., cubic contents 15.6 million cubic yards. They literally shifted a hill into the river. We often used to watch the progress and now, after seven years of its completion, there is no evidence of where they took the soil from. There are trees planted everywhere.'

Puts our problems into a slightly different perspective! Though they say they also have their problems waterwise - its not always 'plain sailing' 'down under either apparently!

KEYS FOR BWE SANITARY STATIONS

A standard key is now available for the 106 chemical toilet disposal units now in use, price 25p. To ensure that keys do not fall into wrong hands, customers will be asked to produce their craft licence.

STILL REQUIRED - '99's No. 2. (6 copies), No. 3. (4 copies)
Any generous donors?. (We hope to have one or two bound volumes on offer later)

CHANGE OF ADDRESS

PLEASE let us know if you have changed yours!
Also note the changes on the committee page.

- 8 -

SOME NEW GUIDES TO THE WATERWAYS

NICHOLSONS GUIDES TO THE WATERWAYS. 4, NORTH-EAST
BY Robert Nicholson Publications for BWB - price 75p

The high standards of Volume 1 (South-East) and Volume 2 (North-West) are fully maintained in Number 4. Practical Cruising Hints and sections on History, Buildings, Wildlife, Fishing, Walking etc., are followed by exceedingly detailed maps and guides to local waterways. These include the Trent, Trent and Mersey, River Soar to Leicester, Erewash, Fosdyke and Witham, Chesterfield, Sheffield and S. Yorkshire, Aire and Calder, Calder and Hebble, Selby, Huddersfield Brcad, New Junction, Ripon and Ure, and Pocklington. The North-East has long needed something of this kind, much of the area having had no readily obtainable guides at all. If some of us find the print rather small, it is always clear, and this is a small price to pay in order to have the whole region within one compact and authoritative volume.

Volume 4 is, of course, of special interest to PCAS readers and has been eagerly awaited here since the weekend Kaye Wellings resolutely tramped the Pocklington Canal researching. For this is the first time this 'Remainder' waterway has appeared in a BW cruising guide. And the editors have done us proud, with a full-page photo of Coats Lock and Bridge and four pages of route maps, information etc., (Though 'water extraction plant at Easingwold' should read 'Elvington', of course.) It is welcome also to see the more industrial waterways given good coverage - they often interest the addicts as much as the more popular cruising grounds. Tom May's cottage gets a mention on page 102. Only the non-BW Rivers Ouse and Derwent are omitted.

Altogether Vol. 4. is a 'must' for the North-Eastern enthusiast, whether he go by boat, on foot, or by fireside armchair.

SMN

SAVE WATER NOW ! - Share a Lock!

CANAL CAPERS by Raymond O'Kelly

As the longer evenings arrived, our thoughts and deeds turned towards our Canal, the beck and the River Derwent. This is the story of how two young men were introduced to the Waterways. First of all they had two weeks of intensive rowing training up the Canal and, inspired by the recent TV film "The Source of the Nile", decided to find the source of the Canal; it was found, unfortunately, not at Canal Head but under the oil pipe bridge at Storwood.

When the Captain of the "Wanderer" decided they were competent enough to cruise forth, a trip was planned with a full crew of helmsman, two oarsmen and mate. It was a beautiful evening for boating - the wind had gone, the sun was still with us, the water calm and all was peaceful. The wild life from the Nature Reserve next door were a delight to see and hear, including the baby duck that kept the Working Party company on the Saturday. We made a good launching and all souls got aboard without wetting their feet. We set off, going at a good rate of strokes per minute, striking at least 30 a minute, when the helmsman shouted, "Landing ahead!" It did look good with all the coping stones in place and the new brickwork, headers and stretchers, not forgetting the landscaping of new-laid turf. We shot through the narrow gap, making sure we did not scrape the sides (mustn't undo all that newly done "volunteer work").

(continued next page)

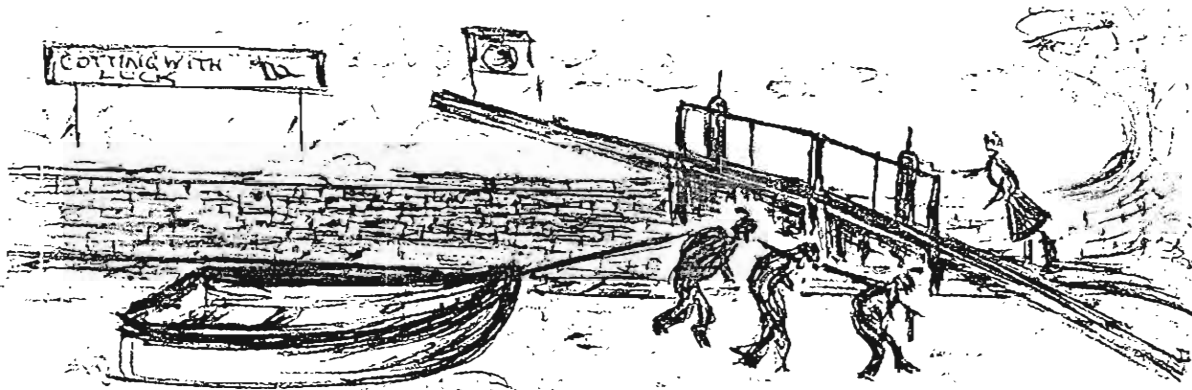
B.T.H. TRAILERS

BOAT TRAILERS FOR LIGHT DINGHIES, CRUISERS,
DEEP "V" POWER CRAFT,
DEEP "Q" SAILING BOATS,
ALL OTHER TYPES OF TRAILERS.

Local Agent: E. EXLEY, Cherrytree Cottage,
Melbourne, York. 'Phone: Mel. 472.

We were approaching the hazards of the Canal, and the helmsman had his work cut out, steering between the floating beds of reed. Far side of the Beck, as some of you will know, on the right hand side, is a flood bank. Where this bank curves away from the Canal it was decided we should pull out and cross overland and drop into the Beck and return downstream to rest the oarsmen before venturing up the Derwent. When this point was reached the helmsman said, "There's the flood bank!" upon which the mate replied, "I thought that was a potato pie". The 1st Oarsman, of farming experience explained "It's a b...y BIG 'UN!!" and the 2nd Oarsman, of Potato Marketing Board experience, said feelingly, "I wouldn't like to measure it!"

We duly re-launched into the Beck, which was very fast flooding, and soon made our way down at a fair pace until we met the incoming tide. I wonder how many local people know that their Beck is tidal? Once more the oars were brought into use in real earnest and we then approached "Spurn Point" which we reached well - and so into the Derwent. It was suggested if the oarsmen pulled well together, they should visit the house on the far bank, where they might be refreshed. The bows fair leapt out of the water and soon they were enjoying a large pint. The view from this place is remarkable, especially as the sun was setting.



But all too soon we had to move on, as we had decided to row up the River to as near Wheldrake as possible and we had to watch the tide. We enjoyed our trip up and back on the Derwent, the water being very clear. On re-entering the cut, we decided to pull out and drag the ship up past the lock, as we did not have a key to unlock the paddles. Whilst resting from our strenuous labours beside the top of the lock, however, we went to have a look at it and found we could have come through it! Imagine the choice remarks that were passed, the most presentable one being, "I've a good mind to take it back and chuck it in and come through!"

We finally returned to our moorings as dusk was falling and all agreed it had been fun. We have had some good nights on the Canal but there ARE other things in life besides boating and canals, as on this very wet night I have written this!!!



COTTINGWITH RALLY 1973- A CAMPAIGNING RALLY

We did originally intend to have a summer Garden Party, together with a gathering of trailed craft, higher up the Canal. But, since the delays have made it especially vital to show to the new County Authority that there is a genuine call to re-open the Canal, the Committee decided to go to Cottingwith again this July. It will be a campaigning Rally and Garden Party - a fairly informal affair, but we do hope to see lots of boats there, at least for some part of the time. On foot or on your boat, though, DO COME if you can. We shall do our best to give you a happy time.

Boaters are requested to contact Mr. Bill Parker - at home in Bradford 'phone 636047, or most weekends on his boat "Comet" at Cottingwith (also at Sowerby Bridge Water Festival.)

WATERWAYS NEAR AND FAR!

INLAND WATERWAYS ASSOCIATION -- NEW E. RIDING SECTION

The N.E. Branch of IWA has recently re-organised itself into a main Branch committee plus three sections, Northern, West Riding and East Riding. Each Section committee will run local meetings and try to co-ordinate all waterway interests in its area. (Please see "Diary" page).

Chairman George Parkes, Secretary his wife Alison, Treasurer Peter Leadley, (the team largely responsible for last winter's excellent Hull meetings). Market Weighton, Driffield, and PCAS now have a representative on this committee - which has had its first discussions - useful, friendly and auguring well for the future.

SMN.

MARKET WEIGHTON CANAL SOCIETY FORMED

Despite some vigorously voiced opposition, a lively public meeting on April 15th, at South Cave, voted to form the M.W. Canal Society. We wish Bruce Miles and his team well and we hope they will have the success they deserve in smoothing out various teething troubles and getting ahead with their plans.

WOMENS' INSTITUTES BACK THE WATERWAYS

The WI supports the waterways, and it is well-informed support. The Yorks. County Federation recently heard Dr. Brian Beagley, (Canal Transport Marketing Board) urge them to support the expansion of Yorkshire's waterways, especially the Sheffield and S. Yorkshire. Transport rates in the area could be cut by 25%, he told them.

OLD STRATFORD ARM (BUCKINGHAM ARM) PUBLIC ENQUIRY

Presumably as a result of protests (see last "99"), the Minister decided to hold a Public Enquiry. PCAS were to be represented or included in with IWA.

A number of people (including one or two student enquirers) for donations.

To several kind donors of past "99"s for binding.

To the households who have been hosts to the Committee this winter while the Chairman was busy building and moving his farm. To the retiring members of the committee for their work. Also to our ever-helpful Auditors and Bank Manager.

To Margaret O'Kelly who has offered her welcome help as Assistant Secretary.

To Mr. Bill Parker whose sparetime printing press regularly works overtime.

To Mr. Brian Latham for the gift of a boat for Working Parties, and to Mr. Bob Triffit and helpers for moving it from Leeds Basin to Cottingham (overtaking an astonished Rolls Royce en route! - A64 patrol car thankfully too amused to check on speed limits!)

And last, but not least, to John Dodwell for making time to come from London and give us an excellent talk at our A.G.M.

SAVE WATER NOW!!

After four drier than average years the country is seriously short of water. It is vital that all canal users should appreciate the urgent need to economise water at all times. IWA and BWB, in consultation with the Boat Clubs, have issued a joint appeal to this effect, and they ask us all to help.

SAVE WATER NOW!!

Yorkshire Derwent

**THE
HALF MOON
INN**

**BOATING
CLUB**

**BRIGHTON
BUBWITH
NEAR SELBY**

BUBWITH 407

Proprietors:

W. & B. RICHARDSON,

Membership invited.

**Mooring, slipway, landing,
caravan facilities.**

**Please contact for further
details.**

PCAS ANNUAL DINNER - SATURDAY MARCH 3rd

We are greatly indebted to Mr. & Mrs. Loft and Mr. Grever for yet another excellently organised and MC'd Dinner - our second at the Abbey Park Hotel, York. A very good meal and a very enjoyable evening.

Our Chief guests were Mr. John King, Coxswain of Bridlington Lifeboat, and Mrs. King, and Mr. I.M. Walker, BWB Area Engineer, and Mrs. Walker. We were happy to have also NE Midlands member of IWA Council, Mr. Mike Oxley and his wife Val. who were rounding off a day on the Canal and the Derwent.

Mr. Walker, proposing the toast of the Society, said that its results to date were "no mean achievement". But, he warned, financially this was only the first skirmish. Much would depend on the new Humberside Council. He was glad PCAS stressed the amenity value of the Canal for all to enjoy.

Mr. King described the 10% annual increase in the number of small boat owners, many of whom went to sea totally unprepared, causing undue strain on the rescue services. Society members, with their Canal as a training ground, could ensure greater skill and preparedness among boat crews, he said, even though this was not the main reason for restoring the Canal.

ANNUAL GENERAL MEETING - SATURDAY, MARCH 31st

A large attendance suggests that we did well to revert to a Saturday for the AGM. The Chairman reviewed the year's activities, in entertaining vein. He also thanked all who worked so hard to support the Society. The Treasurer reported a successful year despite rising costs, and he thanked those responsible for the Stall, which had contributed a good part of our income.

The meeting gave a warm welcome to Mr. John Dodwell General Secretary of IWA, our guest speaker. His remarks are reported in CILL SILT.

All four officers were re-elected; D. Duke, H. Green, J. Jeffery, and R.C. White, who have another year to serve, are joined by M.O'Kelly, R. O'Kelly, B. Latham, and R. Triffit.

NEW NARROW BOATS

NONE BEEN BUILT FOR A GOOD MANY YEARS,
but we can now offer the nearest thing to "Josher" line, since Yarwoods finished building.

Call and see our 'Hampton class tug and cruiser hulls. 35 ft.—70 ft. Traditional steel construction; or if your choice is for a roomy 25 ft.—30 ft. cruiser, then our "Compton" steel hull may be just the thing you are looking for.

Engine fitting, cabin work and fitting to completion can be undertaken to customer requirements at sensible prices.

NARROW BOAT TRIPS AND ADVENTURE BOATING HOLIDAYS

- 1 **Narrow Boat 'David'** for charter from Brewood on the "Shroppie" 50 seats, Galley. Bookable for any day, afternoon or evening trip.
- 2 **Narrow Boat 'Adder'** for up to 12 passengers operating on 'Adventure' boating camping holidays. Crew provided. Also bookable, with crew, as a 6 berth Holiday Cruiser.

DRY DOCKING up to 72'0"

in COVERED and HEATED MODERN BUILDING

SEND S.A.E. FOR BROCHURE:—

CANAL TRANSPORT SERVICES

NORTON CANES DOCK, LIME LANE, PELSALL, STAFFS.
PHONE: BROWNHILLS 4370

DISPLAY, PUBLICITY AND INFORMATION

YORKSHIRE MUSEUM DISPLAY ON WATERWAYS

The Exhibition seen at Burnby Hall Museum last December was on show in York during March and early April. We are very grateful to Mr. Alan Butterworth, the Curator, and his staff for allowing PCAS to be there too. They gave us a good pitch, and we were also able to include some IWA material, the new BW posters, Derwent and other local projects.

WANTED: PHOTOGRAPHS OF POCKLINGTON CANAL

Publicity is important! Can you lend us any old photographs (or post-cards or drawings etc.) of anything on the Canal? We should like to copy them to put on the Stand. Do you know any-one else who might do this?? Could you produce recent or new photographs of people or machinery at work on the Canal? "Before and After" views of the same spot are especially useful. Do you have pictures of any interesting items on or around the Canal, buildings, lock gear, signs etc.? We have an attractive, modern stand. Please help us to make the best possible use of it.

SAVE WATER NOW !

PUBLICITY

Talks and slide-shows on the Waterways in general and on Pocklington Canal (and the River Derwent) in particular, have been given in recent months to Church and School Groups, Young Wives' Club, Young Conservatives, YHA, several WIs and some private gatherings. More in the pipe-line.

"WATERWAYS WORLD" - INDEPENDENT MONTHLY

"Waterways World" goes from strength to strength, covering all aspects of Inland Waterways world-wide. A really excellent 20p. worth each month.

Note: Vol. 3 is promised later this month and it will include the Severn, Worcester/Birmingham, Staffs/Worcester, BCN, K and A., also the Bridgewater and Taunton and Brecon and Abergavenny. Vols. 5 and 6, covering the Midlands and Scotland, are in preparation.

Nicholson Guides Editor Andrew Darwin appeared recently in a first-class TV item pleading for the sympathetic restoration of the Leeds Basin and local canal buildings.

LADYLINE CRUISING GUIDES - 2 THE OXFORD CANAL

3 THE SHROPSHIRE UNION (with MIDDLEWICH ARM) each 30p

Vol. 2. by H. McKnight and J. Plowright. Vol. 3. by H. McKnight. Attractive, informative and well illustrated natural curve maps this time - much better. All good value and thoroughly recommended. Farmers will be glad to see their timely advice to treat grass as a growing crop, like corn!

CANAL ENTHUSIASTS' HANDBOOK NO. 2. DAVID AND CHARLES

A mine of information on Waterway authorities, clubs, societies, books, ideas for trips or holidays, both here and in Europe and America. Canal cottages, restoration and commercial prospects, good photographs. Not cheap at £2.75 but authoritative.

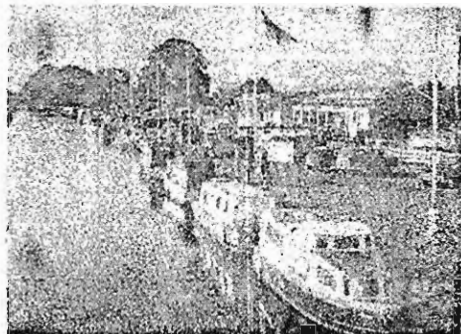
CONGRATULATIONS TO BWB'S 'WATERWAYS NEWS'

Voted an Award of Merit in the top twelve business House Journals. Congratulations to Editor Sheila Doeg and her assistant Julie Burton! Always lively and readable, their enthusiasm is the thoroughly infectious sort. They do a real service to the Waterways as well as to BWB. Keep up the good work! (Available to the public at 50p per annum, from BWB).

Ladyline

Invites you to view the largest selection of new and used boats and engines in the country at:-

the BIG name in boating



Blue Line Marina,
Braunston, Nr. Rugby, Warwickshire. →
Tel: Braunston (Northants) 325/216

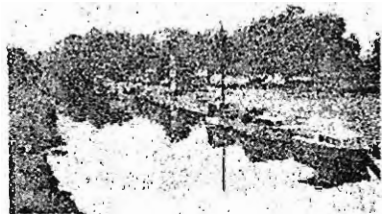
Betton Road,
← Market Drayton, Shropshire.
Tel: 3101/3102/2267.



← Barbridge, Nr. Nantwich, Cheshire.
Tel: Wettehall 682.



Hanbury Marina,
Hanbury Road, Nr. Droitwich,
Worcestershire. →
Tel: Droitwich. 3002.



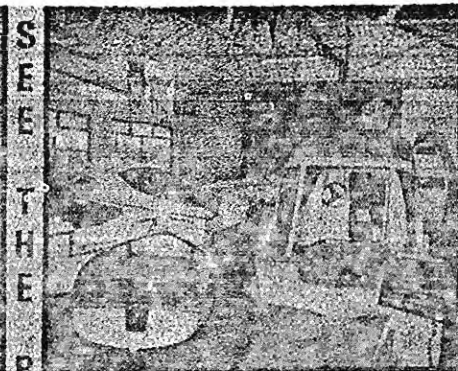
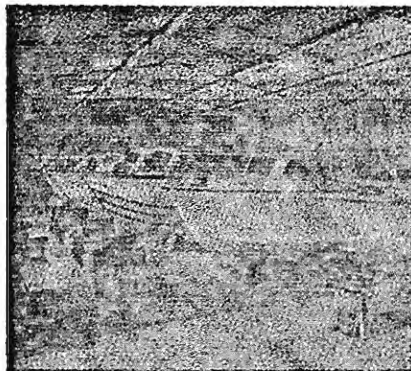
Distributors of:- Norman, Dawncraft, Nauticus, Burland, Dolphin, Fairline, Ormelite, Shetland, Dejon, Cougar, Sea Hawk, Glastron, Fletcher, Shakespeare, Tepco, With, Fibrocell, etc. Mercedes Benz, Watermota, Mangoletsi, Chrysler, Johnson, Mercury, Crescent, Seagull, Sea Bee.

The Boat Showrooms of Gt. Britain

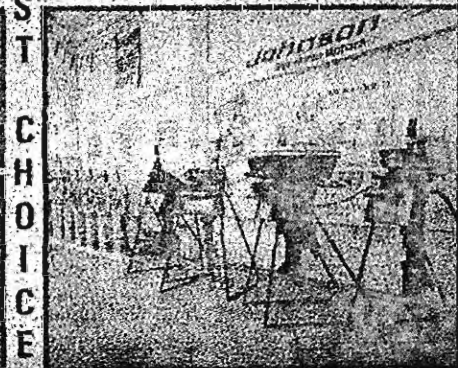
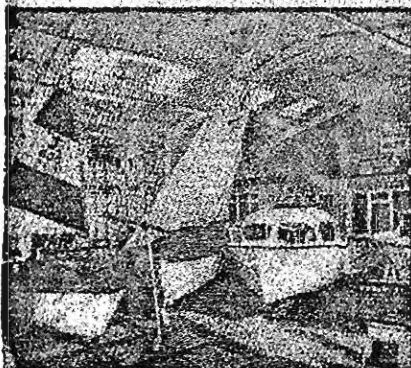




CHOOSE WISELY
VISIT US FOR THE LARGEST
SELECTION OF BOATS & ENGINES
IN BRITAIN



LADYLINE LIMITED



THE BIG NAME IN BOATING
FOR ALL YOUR BOATING NEEDS

VISIT US AT:— and now at
Thorne

Hanbury Marina,
 Hanbury Road,
 Nr. Draitwich,
 Worcs.
 Draitwich 3002

Betton Road,
 Market Drayton,
 Shropshire,
 Market Drayton 2267 and
 3101/2

Blue Line Marina,
 Braunston, near Rugby,
 Warwicks.
 Braunston (Northants)
 325 and 216

Barbridge,
 Nantwich,
 Cheshire
 Whettenhall 682

STOP PRESS: Lymm Marina, Warrington Lane, Lymm, Cheshire. Tel: Lymm 2945

and Mountsorrel Marine Centre,
 Nr. Loughborough. Tel: Rothley 2144



THE INLAND WATERWAYS OF EAST YORKSHIRE
1700 - 1900
by BARON DUCKHAM - E YORKS. LOCAL HISTORY
SOCIETY.

Baron Duckham is no stranger to the rivers and canals of Yorkshire. His book on the Ouse is a standard work, as also his slimmer volume on The Navigable Rivers of Yorkshire; and he has published articles, in the Journal of Transport History and elsewhere, on his researches into the history and fortunes of the Derwent and other waterways.

This new booklet (72 pages), produced for the East Yorkshire Local History Society as part of their excellent series on various aspects of East Yorkshire history, is likely to interest a wide readership.

For centuries the Humber has been at once a lifeline and a frontier to the wide East Riding countryside to the North of it. When roads were often bad and railways not yet invented, the Humber and its tributaries provided the main supply route for the district, linking it with the Continent and other ports but effectively separating it from much of neighbouring England. Mr. Duckham traces the early improvements to the Hull and Derwent navigations, and follows the building of the new waterways such as the Pocklington, Market Weighton, Leven and Driffield Canals, which further opened up the area. He traces their largely agriculturally-based heyday, and their gradual decline due to the railways - a decline which mouldered gently on for another fifty or sixty years after 1900, where the book really ends its story.

The last few years however, have seen a spectacular rise in the fortunes of inland waterways - for leisure rather than for commerce - and they are being restored here, now, as elsewhere. In this connection PCAS is described as: 'this extremely active and enthusiastic body....'

'Here is an East Riding venture', says the author, 'aimed at preserving something of the past, improving the present and assuring the future. May it prosper!'
Aims which will be shared by the two or three other restoration groups now at work in the area.

The recently started Humber Bridge will soon bring the East Riding waterways within reach of many more people from south of the river. In fact it will probably transform the life of this still rather isolated area as much, if not more than did the growth of the new waterways in the eighteenth and early nineteenth centuries. It is good to have Mr. Duckham's book just as the East Riding and its waterways are entering on a period of renewed activity. Researched in detail, yet highly readable, it omits only the Ouse and the Humber creeks, and it will prove fascinating not only to waterways fans but to all who have interest in the East Riding of Yorkshire.

S.M.N.

Containing scurse list, bibliography and map, plus list of other EYLHS publications, it costs 80p.
Apply Secretary, EYLHS, Purey Cust Chambers, York YO1 2EJ



SLOW BOAT THROUGH PEMINE WATERS - FRED. DOERFLINGER

Paperback edition - Tandem Books 35p. illustrated

Frederic Doerflinger did a great service to the Lancashire and Yorkshire waterways in this book, first published in 1971. It is a mine of information on their history, the people beside them, present condition and services available. The author has a discerning eye for the buildings and other rich heritage of the industrial revolution which surround these waterways. Above all he is eminently readable and good company. At 35p this is indeed good value - a real 'best buy' for the North.

SAVE WATER NOW ! - Close all paddles correctly!

P.C.A.S. STALL

For several years past the Stall has shown up at Boat Rallies, Agricultural Shows, Canal Society and Public Meetings, etc., in Yorkshire. A year or two back we appeared at the National Boat Rally at Guildford, and we hope to get down to Ely for this year's Rally. While the Stall carries a selection of articles for sale, such as stationery, tea cloths, books, Society badges, etc., our Stand provides for the mind and the eye - photographs, maps & propaganda for the canals in general. We are fortunate in that the local members of the Society come up with gifts to be sold on the Stall and so help to swell the proceeds and for their generosity we are most grateful.

I would like to appeal to the more distant members of our Society for help from them in furnishing our Stall to further the cause of restoring our Canal. I venture to ask if some of you would take a hand in providing for our Stall anything that would sell such as sweets, leather goods, woollen goods, calendars, pottery ashtrays, etc. Postage would be willingly paid - please address to John Nix, 74 Westminster Road, YORK. As our Stall carries a large proportion of goods bearing VAT, and as the Society is a registered Charity, I have been appointed a Registered Trader. This implies that anyone who purchases taxed goods on behalf of the Society or Stall should remember to ask for an invoice stating the amount of VAT, if any, and the nett value of the goods purchased. If you then pass on the invoice to me, I will in due course pass it on to the Excise Authorities to have the tax refunded.

J. Nix.

ON SALE

'Pocklington Canal, The Case for Restoration' (PCAS);
'The Hull and Cottingham Canal Project' (R. Bain);
each available from Secretary, 30p. incl. postage
Proceeds to Restoration funds.
Enamel Members Badge now 30p. Supporter's Badge 7p

Diary of events

Sat. June 17th Hull Cance Club Race, 11 a.m.
from Driffield Canal Head.

June 17/18th Lincoln Rally, Brayford Pool.

June 23/24th Sowerby Bridge Water Festival

June 30/July 1st PCAS Working Party

Sun. July 1st Pocklington Canal Walk/Ride,
PCAS/IWA E.R. Section

Mon. July 2nd PCAS Committee Meeting

Sat. July 7th Seaton Ross Show

July 10/11/12th Gt. Yorkshire Show, Harrogate,
(PCAS Stand will be there)

July 14/15th W.P. at Howsham (Derw. Soc.)

July 21st Sat. Bishop Wilton Show

July 25th Wed. Driffield Show

July 28/29th PCAS Working Party Weekend and
COTTINGWITH RALLY and FETE

Mon. July 30th PCAS Committee Meeting

Aug. 3 - 6th IWA National Rally, Ely

Wed. Sept. 12th PCAS Committee (provisional)

Sat. Sept. 29th PCAS Cance and Dinghy Cruise

NEWS FROM E.R. SECTION IWA - (PCAS PLEASE JOIN IN!)

On SUNDAY JULY 1st we shall be visiting the Pocklington Canal, meeting at Cottingwith at 2 p.m. By some walking and some riding (in cars!) we hope to see a fair bit of the Canal.

Our next indoor meeting will be on SEPTEMBER 14th at 8 p.m. in the Applied Science and Maths Building, Hull University, Mr. R.K. Lang, Sec. of Hull Lighter Owners' Assn. will be speaking to us. We shall be very pleased to welcome PCAS members.
A. Parkes, Secretary.

NOTE TO PCAS MEMBERS - If you are not on the W.P. it is hoped that many of you will join the WALK/RIDE on July 1st along your Canal, to act as hosts to our guests from IWA and to see for yourself if you haven't been along lately (- or at all!). DO COME!

DON'T FORGET

FUTURE WORKING PARTIES

June 30/July 1st,

July 28/29th (PCAS Rally) Sept. 8/9th.

Please report to D.D. Mill Farm. There is a good deal of bricking under Hagg Bridge, erecting of name boards, Rally preparations etc. Various other tasks depending on BWB progress and weather.

Also note Working Parties at Howsham (July 14/15th).

MARKET WEIGHTON CANAL - "BIG DIG" AT SOD HOUSES

July 7/8th, 14/15th, 21/22nd. Lots of young volunteers from "Outset" expected, on a sponsored Dig which will benefit Charity as well as M.W. Canal; some experienced "supervisors" would be welcome. Please contact Bruce Miles, Market Weighton 2470 if you can help at all.

CANOE AND DINGHY CRUISE

SAT. SEPTEMBER 29th.

Make a note of the Date NOW! Details later.

WANTED! Another MARQUEE. Second-hand. Reasonable. Approx. 20' x 30'. To supplement the existing one and eventually take its place. Any offers or suggestions gratefully received. (PRESENT MARQUEE still available for hire some dates.)

TO BE RAFFLED FOR PCAS - BEAUTIFUL HAND-DRESSED DOLL

Once again Mrs. O. Leonard has given a beautiful, dressed DOLL to be raffled in aid of PCAS funds. The Doll is life-like and pretty and her clothes are perfect in every detail. We are most grateful for this generous gift.

Tickets 5p. To be drawn on July 28th. (winner to be notified). Tickets and the Doll will be on the Stall at forthcoming events, and you can get supplies of tickets from Thornton, Pocklington or York.

PLANT A TREE IN 73!

George Cooper & Sons
(COAL) LTD.

Deans Lane,
POCKLINGTON, York
Telephones 3185 & 3075



Wholesale Distributors throughout
the East Riding
of all Grades of

HOUSE COAL,
COKE,
COALITE,
PHURNACITE



It's Phred Again

Hello again friends! Great news ... prepare yourselves for the descent of BWB's monsters! As the towpath growth achieves tropical proportions, parting the grass we are assured on the best authority that big cats, and dinosauric draglines and mud-eaters are about to gorge and disgorge themselves from one end of the waterway to the other, by Jove!

As the temperatures soar so do one's hopes. What a wonderful way to develop a thirst! Phred's beside himself and grossly in need of the potion

COTTINGWITH RALLY AND GARDEN PARTY

COTTINGWITH LOCK

JULY 28th/29th

To be opened at 2.30 p.m. by Mrs. B. M. Ashwin
Boats, Stalls, Sideshow, Teas etc. Evening
Barbecue and Bar.

Come and Enjoy Yourselves! COME AND HELP!

Bring your Friends! Your Canal NEEDS YOU!

P.S. It can't possibly rain as much as last year!

HELP WANTED!

PLEASE could YOU help on the Stand at any of the Shows - especially Harrogate - or help in any way at Cottingwith Rally. PLEASE contact us - don't wait to be asked. We are asking around, but please VOLUNTEER.

We could also do with someone to organise the "99" advertisements. Could YOU?