

DOUBLE NINE
THE
POCKLINGTON CANAL
AMENITY SOCIETY



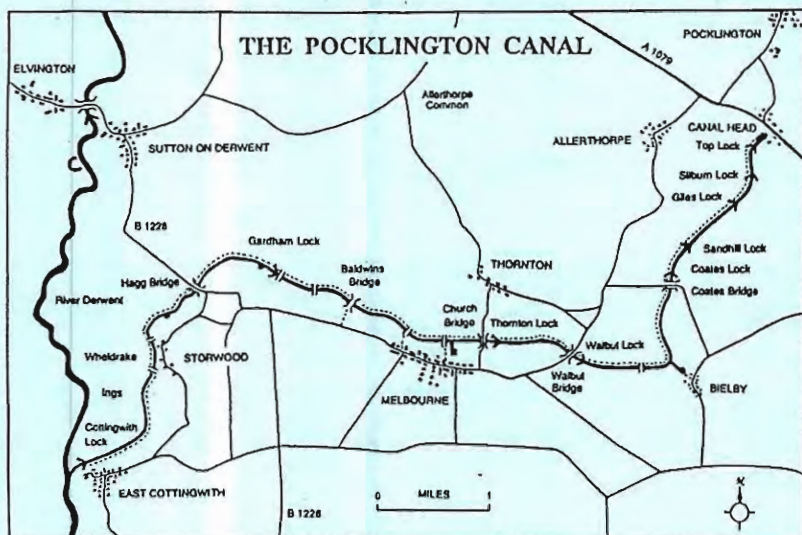
MAGAZINE

April 1996

No. 71

THE POCKLINGTON CANAL AMENITY SOCIETY

Registered Charity 500637



PATRONS

The Earl of Halifax East Yorkshire Borough Council
David Davis Esq MP Major Sir Patrick Wall MC
Cllr S M Burch, 42 Willow Park Rd,
Wilberfoss, York YO4 5PS Tel: 01759 380351

E Y B COUNCIL REPRESENTATIVE

CHAIRMAN and WP ORGANISER VICE-CHAIRMAN

P R Waddington, Church House, Main Street,
Hemingbrough, Selby YO8 7QE Tel: 01757 638027
J W Gatenby, Littlethorpe Cottages, Rudston,
Driffield, E Yorks YO25 OJF Tel: 01723 891194

SECRETARY and '99' EDITOR TREASURER

Mrs S M Nix, 74 Westminster Road,
York YO3 6LY Tel: 01904 623338
P H Price, The Mill House, Canal Head,
Pocklington, York YO4 2NW Tel: 01759 304657

MEMBERSHIP SECRETARY OTHER COMMITTEE MEMBERS

Mrs Y Huitson, Rose Cottage, Melbourne,
York YO4 4QE Tel: 01759 318565
A J Anderson, C R Huitson, B Ogilvie,
G Parkes, J Wootton & R J Young

POCKLINGTON CANAL BOAT CLUB SECRETARY BRITISH WATERWAYS

Mrs Gill Forth, Orchard House,
Millington, York YO4 4JL Tel: 01759 306791
Canal Manager for Pocklington Canal: K Boswell,
Manager N Yks Navs, Naburn Lock, Naburn, York YO1 4RU Tel: 01904 728229

Note: Opinions expressed in this magazine are not necessarily those of the Society unless so stated.

THE BW/EN MANAGEMENT DECLARATION During the last six months there have been many developments that have needed our attention. I will mention a few here. Firstly the revised version of the Management Declaration on which I reported in the last '99'. I am most disappointed that British Waterways signed it without introducing amendments to make it more acceptable to the Society.

The revised document, on which we were invited to comment, had been expanded somewhat but it still contained the clause concerning the "navigation status quo" to which we had originally objected. The Society responded by appealing to BW at various levels, reiterating our objections. We objected most strongly to this clause, not only because it seemed designed to impede the remainder of our restoration work, but also because it imposed on the Society the most unreasonable onus of proving the relationship between boating and nature conservation. But to no avail. British Waterways and English Nature signed the revised Declaration on September 20, 1995.

THE LOTTERY Another matter that has come to the fore in recent months is our attempt to obtain funding from Lottery funds. In the last year a number of people have asked what we are doing to attract funds from the National Lottery. The answer is quite a lot, although we are not yet in a position to put in a bid. The process of submitting an application is far more complicated than most people realise and I think it will be several more months before we can expect much progress on this front.

Heritage Lottery Fund The most appropriate distributor of Lottery cash appears to be the Heritage Lottery Fund and we have been working on an application for many months now. The project we decided on included all the work necessary to complete the restoration of the lock structures on the canal. This involves the restoration of Sandhill, Giles and Silburn Locks and completion of works at Top Lock. The first task was to put together estimates and to assemble our thoughts on other sources of funding -- Lottery funds will only generally contribute a proportion of the cost of a project.

Several hurdles still to be surmounted We had a meeting with British Waterways to discuss the subject last November and some progress was made, although there are a number of hurdles to pass before an application can be despatched. We have judged it prudent to obtain all the necessary consents before submitting the application and hope that, by so doing, our chances of success will be enhanced.

Listed Building Consents We have also submitted applications for Listed Building consents for the locks involved because all are Listed Grade II structures, as are eight of the nine locks on the canal (only Gardham is not 'listed', due to the fact that it had to be almost entirely rebuilt in the seventies). The applications, which were submitted in January, involved a good deal of work -- and paper! -- as each application had to be supported by drawings and a specification. The proposed works include repairs to brickwork, installation of lock gates and re-instatement of traditional paddle gear. At the time of writing we are still awaiting the outcome of these applications.

*

*

*

STOP PRESS! *The Cobham Resource Consultancy has been retained by BW/EN to carry out a survey of the canal and of the aims and objects etc of all interested parties for the future of the canal. PCAS has just submitted a statement to them. Details later.*

2. **CHAIRMAN'S COLUMN** *continued...*

PARLIAMENTARY WATERWAYS GROUP The Parliamentary Waterways Group is primarily a forum for members of both Houses of Parliament to meet and discuss matters related to waterways. Besides members of the Group there is a large number of Associate members, which includes many organisations and individuals with a waterways connection. PCAS is an Associate member and we try to attend all the meetings. Because of the distance involved in travelling to London our long-standing member Peter Hardy, who lives in the London area, frequently represents us. I try to attend in person, as do one or two other members, if the subject matter of the meeting is of particular reference to the Pocklington Canal.

The meetings usually involve a visiting speaker, with the opportunity for questions. All the business has to be conducted at great speed because the committee rooms of the House of Commons can only be booked for an hour, so the room has to be vacated and prepared for the next meeting within that time. Consequently much of the useful discussion takes place in the corridor outside.

The principal speaker at one recent meeting was the Earl of Cranbrook, current Chairman of English Nature. We had the opportunity to put some questions to him, and his answers did contain some useful information. Other meetings we have attended have been addressed by the BW Ombudsman, the Government Planning Minister, Robert Jones, the National Rivers Authority, the Chairman of BW, and speakers on the River Thames.

NORTHERN CANALS ASSOCIATION This association is a loose and fairly informal grouping of canal societies and trusts, based in the north of England. It meets three times a year and the meeting is hosted by one of the member societies. Usually the meeting takes the form of the host organisation giving a presentation on their current activities, followed by a site visit. There is usually an opportunity for all the organisations represented to report on their latest news, and for a general exchange of information. PCAS tries to attend all the meetings and most recently visited the Chesterfield Canal.

THANK YOU'S As another Annual General Meeting approaches I would like to record my thanks to all the committee members who have served the Society during the last year. Also my thanks to all the other helpers who contribute to the success of the Society in various ways, particularly those who come to working parties, contribute to fund raising or help at the Information Centre.

One person in particular deserves especial mention. **Cllr. Sam Burch** has been the representative of East Yorkshire Borough Council for our Society and has been attending our committee meetings now since May 1993. He has helped us in many ways despite leading a busy public life. With the re-organisation of local government Sam has come to the end of his term of office, although he has assured us of his continued support in a personal capacity. We were very sorry to learn of his recent serious illness and send him our warmest good wishes for a speedy and full recovery.

PAUL WADDINGTON *Chairman*

THE SOCIETY AGM

SUNDAY APRIL 21 1996

The Society's Annual General Meeting takes place at the Wellington Oak at Canal Head on Sunday, 21 April at 2.15 pm approx., in the Function Room, following our usual Lunch there. We hope many of you will join us at the Lunch but you are very welcome to come along afterwards just for the meeting if you prefer. The Bar staff will direct you if you haven't been before. It is very friendly. Bring a friend. **Do come if you can!**
AGM AGENDA: *Apologies, Minutes of last AGM, Chairman's Report, Treasurer's Report & Accounts, Election of Auditors, Election of Officers & Committee, AOB.*

Elections: The four officers are elected annually and the present Chairman, Secretary and Treasurer are all prepared to stand again, as are the current committee members. **But we would welcome nominations for new committee members -- also for a new Vice-Chairman.** John Gatenby is standing down as Vice-Chairman due to work commitments, though he is prepared to stay as a committee member. Please let us have your nominations, in writing, with Proposer, Seconder and signature of nominee as soon as possible. (Yvonne Huitson, George Parkes and Richard Young still have a further year to serve as committee members).

Shela Nix, Secretary

SUBSCRIPTIONS NOW DUE! Annual subscriptions are due on 1st January: *Adults (family or individual): £5; Concessions (unwaged, students, OAP): £3; Life: £50.* Thank you to the many who have already paid up. For those who haven't, please send your subscription - or any related queries - **now** (or at the AGM) to our Membership Secretary, (details inside front cover). Thank you! Thank you, too, to all who add a donation to their annual subscription. It is very much appreciated.

NEW COUNCIL NOW A PATRON OF THE SOCIETY

During January the Society wrote to our new unitary authority, the *EAST RIDING OF YORKSHIRE COUNCIL*, asking them to consider following in the tradition of East Yorkshire Borough Council by becoming a Patron of PCAS. We are delighted to report that they have agreed to our request. Mr John Moran, Head of Recreation and Contract Services for the new Council, wrote to us on April 2nd:

" I am pleased to inform you that the Council's Education, Leisure and Libraries Committee considered your request at its March meeting and was very happy to agree that the new East Riding of Yorkshire Council become a Patron of the Society.

May I, on behalf of the Council, take this opportunity to wish the Society every success with its future endeavours. "



RESTORATION

COATES LOCK ~~~ Coates Lock remains the focus of our attention at the moment. The renovation of the brickwork on the towpath side of the lock is now complete and the coping stones are back in place. This is mostly thanks to some very neat work carried out by Westgate Enterprises, the training agency sponsored by East Yorkshire Borough Council. Unfortunately that organisation has now disbanded as a result of the reorganisation of local government. We do not know whether the new East Riding of Yorkshire Council will establish any similar organisation.

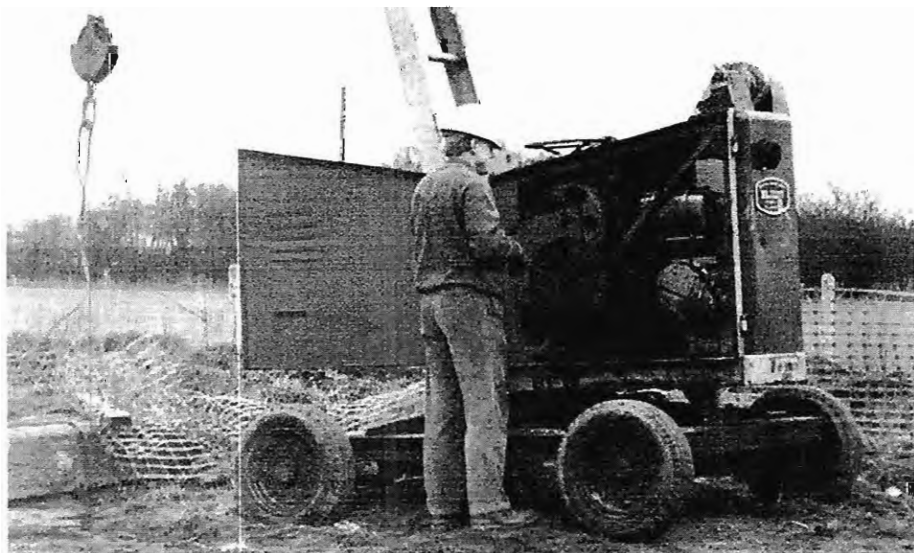
The Waterway Recovery Group (North-East) visited the site on March 9th and 10th and did much useful work. This mostly entailed their favourite activity, which is shovelling silt and debris from the bottom of the lock chamber. The Society's crane provided the lifting power and is proving invaluable asset. It is rewarding to get some return on all the work that has gone into putting it into working order.

The concrete cascade is now no more, having been smashed into probably a million pieces. It was hard work breaking it up but satisfying to see it gone. The old lock gates at the top end, which were embedded in the cascade, have also virtually gone. They were broken up with great enthusiasm by the WRGies.

The remaining work is rather more complicated. Much of the offside of the chamber was built of stone and it has been agreed that a certain amount of it will be replaced in stone. This will require new skills which we have yet to learn. A further complication is that the lower offside wingwall has suffered from weak foundations and what remains is leaning. Some work will be required to replace or reinforce these foundations. Added to this are difficulties caused by the soil conditions which are shifting sands.

So a great deal remains to be done at Coates Lock and we expect to be working there during most of 1996. More volunteers would help to make for faster progress. We are at Coates Lock on the second and last Sundays of the month, starting at 10am.

below: "Jones the Crane"





above: Coates Lock - offside wall and remains of cascade and old gates

LATEST FUNDRAISING PROJECT ~~~ WASTE PAPER !

The Society has added another means of raising money to the many such activities that we already have. This is collecting waste paper, which has the potential to be quite remunerative. At present the activity is centred at Goole and the contributions mostly come from customers of *Goole Boathouse*. All types of waste paper are collected, although it is important that there is NO PLASTIC material amongst the paper.

It would be very helpful if someone living in the Pocklington area could start a collection to increase the quantity. It would probably be necessary to have some sort of shed to store the paper until a worthwhile quantity is accumulated. Alternatively it would be possible to arrange for a skip to be delivered if a suitable site could be found.

Do we have any members who would like to take this on?

Please don't forget that we collect all sorts of other items to help raise funds -- books, bric-a-brac, jewellery etc, etc.

Paul Waddington



50 YEARS OF ACHIEVEMENT

The IWA was formed in 1946 by people who were concerned at the decline in the state of the waterways and were committed to retaining them for future generations. 50 years later this Association, which represents all users of the inland waterway system, has 35 branches in England and Wales involved with over 2,000 miles of waterways.

Waterways a valuable asset to the nation Throughout 50 years of campaigning the IWA has fought for the retention, improvement and restoration of Britain's inland waterways. At first alone, and later joined by increasing numbers of canal societies and trusts, the IWA has brought about a dramatic change in attitudes to waterways, which these days are seen as valuable assets to the nation -- a haven of peace and tranquillity and a vast archive of beautiful and historic buildings and structures. In its Golden Jubilee Year, the IWA is determined to ensure that its campaign to restore historic navigations will continue well into the next millennium.

World Conference As part of the IWA's 50th Anniversary, 35 giant jigsaw pieces, representing each Branch of the Association, will start at Jubilee events around the country and will travel over 5,000 miles to Birmingham by a wide range of boats. There, in June, they will be assembled into a giant illustration of our inland waterways, as part of the opening ceremony of the WORLD CANALS CONFERENCE which is being organised by the IWA, BW and Birmingham City Council.

JUBILEE JIGSAW JOURNEY POCKLINGTON CIVIC SEND-OFF

POCKLINGTON TOWN MAYOR, Mrs Kay West, came to CANAL HEAD with her husband, David, on Easter Monday, to give a civic send-off to the North Humberside piece of the Jubilee Jigsaw. Mrs West gallantly embarked in the Canal Society dinghy, along with our Chairman and the jigsaw piece. She even rowed them a little way down the top pound.

Paul Waddington had explained to the Mayor that, because the upper part of the canal is currently unnavigable by larger craft, it was not possible to take the 'piece' by traditional canal craft. The Mayor wished us well in our restoration activities and said the Town Council fully supported our efforts. She wished the jigsaw piece a good journey and gave us an official letter of greetings to the Lord Mayor and Lady Mayoress of Birmingham from herself and the Town Council, to go with it on its journey.



above: Coates Lock - offside wall and remains of cascade and old gates

LATEST FUNDRAISING PROJECT ~~~ WASTE PAPER !

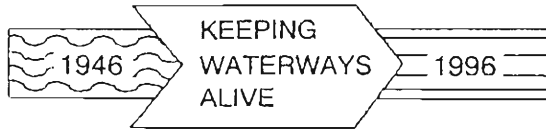
The Society has added another means of raising money to the many such activities that we already have. This is collecting waste paper, which has the potential to be quite remunerative. At present the activity is centred at Goole and the contributions mostly come from customers of *Goole Boathouse*. All types of waste paper are collected, although it is important that there is NO PLASTIC material amongst the paper.

It would be very helpful if someone living in the Pocklington area could start a collection to increase the quantity. It would probably be necessary to have some sort of shed to store the paper until a worthwhile quantity is accumulated. Alternatively it would be possible to arrange for a skip to be delivered if a suitable site could be found.

Do we have any members who would like to take this on?

Please don't forget that we collect all sorts of other items to help raise funds -- books, bric-a-brac, jewellery etc, etc.

Paul Waddington



50 YEARS OF ACHIEVEMENT

The IWA was formed in 1946 by people who were concerned at the decline in the state of the waterways and were committed to retaining them for future generations. 50 years later this Association, which represents all users of the inland waterway system, has 35 branches in England and Wales involved with over 2,000 miles of waterways.

Waterways a valuable asset to the nation Throughout 50 years of campaigning the IWA has fought for the retention, improvement and restoration of Britain's inland waterways. At first alone, and later joined by increasing numbers of canal societies and trusts, the IWA has brought about a dramatic change in attitudes to waterways, which these days are seen as valuable assets to the nation -- a haven of peace and tranquillity and a vast archive of beautiful and historic buildings and structures. In its Golden Jubilee Year, the IWA is determined to ensure that its campaign to restore historic navigations will continue well into the next millennium.

World Conference As part of the IWA's 50th Anniversary, 35 giant jigsaw pieces, representing each Branch of the Association, will start at Jubilee events around the country and will travel over 5,000 miles to Birmingham by a wide range of boats. There, in June, they will be assembled into a giant illustration of our inland waterways, as part of the opening ceremony of the WORLD CANALS CONFERENCE which is being organised by the IWA, BW and Birmingham City Council.

JUBILEE JIGSAW JOURNEY POCKLINGTON CIVIC SEND-OFF

POCKLINGTON TOWN MAYOR, Mrs Kay West, came to CANAL HEAD with her husband, David, on Easter Monday, to give a civic send-off to the North Humberside piece of the Jubilee Jigsaw. Mrs West gallantly embarked in the Canal Society dinghy, along with our Chairman and the jigsaw piece. She even rowed them a little way down the top pound.

Paul Waddington had explained to the Mayor that, because the upper part of the canal is currently unnavigable by larger craft, it was not possible to take the 'piece' by traditional canal craft. The Mayor wished us well in our restoration activities and said the Town Council fully supported our efforts. She wished the jigsaw piece a good journey and gave us an official letter of greetings to the Lord Mayor and Lady Mayoress of Birmingham from herself and the Town Council, to go with it on its journey.

The Jigsaw piece had already had a civic send-off from River Head, Driffield on Good Friday, on its way down the Driffield Navigation following the official Opening of Town Lock, Driffield. On 28 May it will travel on the historic *T.W.Prickett*, from Hull Marina to Goole, where it will be joined by the pieces from West Riding and Northumbria Branches of the IWA.

NOTE: If you would like to join the IWA or obtain further information, please contact PCAS, or IWA direct at: 114 Regents Park Rd, London NW1 8UQ (0171- 586- 2510)

THE EASTER MONDAY RALLY This was a most enjoyable event. Apart from the visit of the Mayor of Pocklington and her husband, visitors could enjoy an excellent display of working vintage engines, including organ music. Our thanks to George Benson and all the owners from the East Yorkshire Vintage Tractor and Engine Club for all their willing help. We were also treated to a two-hour show by some beautiful -- and most appropriate -- radio-controlled model boats from the York Model Boat Club, thanks to John Williamson of Pocklington. The Mayor's dinghy was escorted by a (model!) Police patrol boat, a local type commercial barge and a fully rigged, two-masted sailing boat. PCAS's grateful thanks to ALL who supported the occasion, including BW who ensured the site was tidied in time. And, at the end, the Information Centre, stalls, tombola and donation boxes produced a total of £250!

below: The Mayor, PCAS Chairman and the Jigsaw piece



8.

TOP POUND DREDGED AND DAM REMOVED ~~~

The month of March this year saw long-awaited changes at Canal Head! BW contractors, Wrights of Crockey Hill, near York, moved in at the end of February to prepare the site. The fish were removed and the pound was drained. Part of the neighbouring farmer's field was roped off as a lagoon for the spoil, and hardcore laid to provide access through a gap in the picnic site hedge. Dredging began in early March on the towpath side, then a huge machine arrived back from the south coast to complete the removal of silt across the rest of the channel. It also made short work of removing the earth dam immediately above Top Lock top gates.

For the first time probably, since Mr Mervyn Gray came to the rescue and dredged out the top basin in the summer of 1980, it was possible for visitors to see clearly the mouth of the Canal Head feeder. "Where does the canal get its water?" is one of the most frequently asked questions put to us at the Information Centre. The dredging provided an opportunity for visitors to see the end of the pipe carrying the beck water from the Wolds around Millington under the main road into the canal. There have always been problems here with siltation and we understand that British Waterways intend shortly to make some further improvements above the intake.

The water was turned back on and the area well tidied up in time for the Easter Monday Engine Rally. The fish stock should be returned by the time you read this. A few snowdrops are still in flower and the daffodils rapidly showing colour.

below: first of the dredging Top pound March 1996



The Jigsaw piece had already had a civic send-off from River Head, Driffield on Good Friday, on its way down the Driffield Navigation following the official Opening of Town Lock, Driffield. On 28 May it will travel on the historic *T.W.Prickett*, from Hull Marina to Goole, where it will be joined by the pieces from West Riding and Northumbria Branches of the IWA.

NOTE: If you would like to join the IWA or obtain further information, please contact PCAS, or IWA direct at: 114 Regents Park Rd, London NW1 8UQ (0171- 586- 2510)

THE EASTER MONDAY RALLY This was a most enjoyable event. Apart from the visit of the Mayor of Pocklington and her husband, visitors could enjoy an excellent display of working vintage engines, including organ music. Our thanks to George Benson and all the owners from the East Yorkshire Vintage Tractor and Engine Club for all their willing help. We were also treated to a two-hour show by some beautiful -- and most appropriate -- radio-controlled model boats from the York Model Boat Club, thanks to John Williamson of Pocklington. The Mayor's dinghy was escorted by a (model!) Police patrol boat, a local type commercial barge and a fully rigged, two-masted sailing boat. PCAS's grateful thanks to ALL who supported the occasion, including BW who ensured the site was tidied in time. And, at the end, the Information Centre, stalls, tombola and donation boxes produced a total of £250!

below: The Mayor, PCAS Chairman and the Jigsaw piece



8.

TOP POUND DREDGED AND DAM REMOVED ~~~

The month of March this year saw long-awaited changes at Canal Head! BW contractors, Wrights of Crockey Hill, near York, moved in at the end of February to prepare the site. The fish were removed and the pound was drained. Part of the neighbouring farmer's field was roped off as a lagoon for the spoil, and hardcore laid to provide access through a gap in the picnic site hedge. Dredging began in early March on the towpath side, then a huge machine arrived back from the south coast to complete the removal of silt across the rest of the channel. It also made short work of removing the earth dam immediately above Top Lock top gates.

For the first time probably, since Mr Mervyn Gray came to the rescue and dredged out the top basin in the summer of 1980, it was possible for visitors to see clearly the mouth of the Canal Head feeder. "Where does the canal get its water?" is one of the most frequently asked questions put to us at the Information Centre. The dredging provided an opportunity for visitors to see the end of the pipe carrying the beck water from the Wolds around Millington under the main road into the canal. There have always been problems here with siltation and we understand that British Waterways intend shortly to make some further improvements above the intake.

The water was turned back on and the area well tidied up in time for the Easter Monday Engine Rally. The fish stock should be returned by the time you read this. A few snowdrops are still in flower and the daffodils rapidly showing colour.

below: first of the dredging Top pound March 1996





There'll be no holding them now!!

always take great care and we are pleased to have them. "

" The team were here last weekend. . . The team who come

to help on the canal. Acknowledging our cheque for rental, recently, he writes:
Association, in whose pavilion WRG NE members are accommodated when they come
letter from Mr Ian Williamson, Chairman of the Melbourne Playing Fields

We publish part of a **WATERWAY RECOVERY GROUP (NORTH EAST)**

-- strange, all the same!

larmac surface (ex Garroby Hill) to the road and car parks. Just coincidence, of course
SMS

weeks later the wagons started rolling! Canal Head now rejoices in a much improved

"99", Raymond O'Kelly reported on visitors' comments. Lo and behold -- only two

in bad weather! Each year dates were forecast, but without result. In last November's
road was full of potholes and either covered everyone with dust in summer or with mud

has long been talk about improving the road and car park surfaces at Canal Head. The

As with the dredging there

AND THE ROAD'S BEEN TARMACED!

above: C. Head Basin showing feeder pipe



10.

NEW HORIZONS TRIPBOAT

It's a long time since a stranger walked up to me at Canal Head, one Easter Monday, and enquired whether the Society would like a boat. The boat, we learned, was the hull of a 40 ft steel narrowboat which the owner and builder had not had time to complete. As I have learned in the last year or two, building a boat requires a lot of time and effort.

The major welding work, including the construction of an 11 ft cabin, shotblasting and painting with primer, were carried out at Immingham prior to bringing the shell to Goole. It was very thoughtful of Paul, our Chairman, to buy a marina and provide the facilities needed to continue work on the boat!

The hull is now well protected with paint, but final painting and signwriting must wait until various small welding jobs have been completed. The engine, an elderly but well preserved BMC Captain, has been installed and tested, although a silencer will, no doubt, be a welcome addition.

It is, however, the fabrication and welding of the remaining steelwork that has proved most time consuming. Front doors, back doors, front deck supports, back deck supports, handrails, rudder, gas lockers, seat brackets, sliding hatch, runners for sliding hatch.... An enormous variety of bits and pieces, most of which need to be custom-made, is required to build a narrowboat. At last the end is in sight. We are very grateful to the proficient welders who have kindly given their services free of charge. The front deck has been completed, the rear deck is in hand and large brass portholes have been installed. I'd also like to extend my thanks to Richard Young's parents for allowing their son to use the garage to store, clean and paint an endless variety of steel components.

While there is a lot more work to do, our tripboat should be in the water this summer. We shall, of course, need a Boat Safety Certificate before we can obtain a licence; hopefully this will not cause any great problems or expense. If you would like to help with the tripboat, please come to Goole Boathouse on the first or third Sundays of the month, when there is usually someone working on the boat. I can recommend boatbuilding as an interesting and enjoyable alternative to washing the car!

Alistair Anderson



POCKLINGTON ON THE INTERNET

The town of Pocklington now features on the the World Wide Web. Richard Borrie has, on behalf of the Council, compiled information about the town and its surroundings, which will be of particular interest to tourists. Also included is a list of forthcoming events and links to other Web sites providing regional information. The URL is <http://www.pocklington.gov.uk/> or follow the global superhighway and take the first right onto the A1079!

AJA

INFORMATION CENTRE IMPROVEMENTS ~~~

The Information Centre at Canal Head opened for the first time this season on Easter Monday, with a new, larger display board and useful additional shelving. There are also two new, foldaway tables and fresh paint. The extra display space, both inside and out, means we can display books, toys, bric-a-brac, plants etc, much more effectively. It has also enabled us to clear the side window, which lets in a lot more light and makes for pleasanter working. These improvements are due to regular mid-week 'work parties' through the winter, by Pocklington members Raymond O'Kelly and Henry Richardson. A large amount of the materials used was various people's surplus so construction was sometimes complicated! But costs were minimal.

Helpers welcome -- What we need now is offers to help on Sundays from time to time. A rota is in preparation and any volunteers who could fill a slot would be welcome. We normally have two people there so newcomers need not feel at a loss. Please let me or one of the committee know if you think you could help. Many visitors come to talk to us there and sales last year, of new and second-hand goods, children's 'Lucky Dip' etc brought in £750 towards Society funds for the canal.

Goods for sale -- Goods for sale are always welcome too, both for Canal Head and for the Sales Stall at various events through the season -- helpers for the Stall too!

SW

~~~~~

X X GOOLE BOAT GATHERING 18th / 19th MAY 1996

This is an IWA North East Region event as part of the IWA's Golden Jubilee Year. Cost £6 to cover Public Liability Insurance and Administration. A plaque is expected to be available to all craft attending. Boats are most welcome. You do not have to be an IWA member to attend. Entry forms and all details from: *P. Waddington, Goole Boathouse, Dutch Riverside, Goole DN14 5TB. tel: 01405 763985.*

~~~~~

X X POCKLINGTON CANAL BOAT GATHERING 25,26,27 MAY

Following the very enjoyable Gathering last May Bank Holiday at Melbourne Arm, there have been requests to repeat the event. So, the week after Goole, boats are invited to come up to Melbourne. Tides should be suitable for most boats. We plan to have a Barbeque on the Sunday evening, as before, and the excellent Cross Keys is close by. The Gathering will be an informal, sociable event. We DO hope you will come. Entry forms and all details from: *Mrs Gill Forth (Secretary, Pocklington Canal Boat Club), Orchard house, Millington, York YO4 2TX tel: 01759 306791.*

● **HEAD OF NAVIGATION PLAQUES** Handsome oval brass plaques in maroon, green, black or royal, available on proof of reaching Head of N. by boat; from Huitson's, Melbourne or S. Nix, York (addresses inside front cover); £8.50 collected, £9 by post.

● **PCAS T-SHIRTS and SWEATSHIRTS FOR SALE** Adults' and children's in variety of colours. Good quality, with PCAS logo. Adults: Sweatshirts £13.50, T-Shirts £7.50; Juniors: Sweatshirts £10.50, T-Shirts £6. Good selection in stock. *Apply : S.Nix.*

~~~~~

**COATES LOCK APPEAL** Since the launch of the Appeal for Coates Lock by Lord Halifax a year ago, the total has now reached the grand total of **£9,011**. This included a generous cheque, in March, from the Association of Waterways Cruising Clubs, North-East Branch, for £75. Just as we went to press, this total was bumped up to **£14,011** by a splendid gift of £5,000, attached to a Gift Aid form (which means our Treasurer will also be able to claim the tax back), from a PCAS member who wishes to remain anonymous. Since the last issue of "99" magazine donations have also been received from the following:

Mrs A.Hardy, R.S.Wilkinson, Anon. at Goole, R.J.Hunter, Mr & Mrs Hoekema (Amsterdam), National Assoc. of Waterways Cruising Clubs (N.E.Region), W. Alden and the Mayor of Pocklington, Mrs Kay West; plus "*Buy a Brick*" money collected by A.&P.Topping, R.J.Young and B.Ogilvie, and coupon monies etc via B.Ogilvie.

The total raised to date by the *Thermometer* donation box at Canal head is £198; and by the box (more recent) at Coates Lock itself £75. It is interesting that, following a number of *very* small takings at Canal Head in the weeks before, the week the dredging was completed we found over £10 when we emptied the box.

To all this we can now add a further **£250** total raised at the Easter Monday Rally!  
***The Society's mostgrateful thanks to you all!***

**ALUMINIUM CANS AND FOIL** The total monies raised from cans and foil during 1995 totalled £568.71. 1996 collections to date have brought in £123. Once again we thank all our regular collectors, including the IWA. We also thank a number of new, sometimes unknown, recruits who leave contributions at the Information Centre and elsewhere. It really is worth all the effort. Please keep it coming!

SMN

**TOKEN APPEAL** PLEASE will everyone make a special effort this year to save cigarette coupons, petrol vouchers, tokens from groceries e.g. cereals, soups, biscuits etc, gollies from Robertsons' products, and any other tokens you see, as and when they are available. Don't worry if you do not have enough tokens for an offer because they will go with those other people have saved. But I do need the application form for details.

Tokens, vouchers etc are used to obtain a variety of prizes for the tombola e.g. mugs, model cars, and other toys, books, keyrings, video and audio cassettes to name but a few; other items are put on the stall. Last year we raised £280 on the tombola, all of which was profit, as was £80 from various grocery and cash back schemes. Used postage stamps, both British and foreign, are always useful. Some we can dispose of ourselves; the rest we send to the IWA 'Stamp Bank'.

A poster on the notice board at Canal Head showing the items we save has produced a number of bulky envelopes of "goodies" from visitors to the canal. There is usually an accompanying note saying how much their walk was enjoyed and that we must keep up the good work -- all very encouraging. We also have a number of "token collecting jars" (large sweet jars with a panel on the front showing the items to save) which are proving quite successful. If anyone else can use such a jar, please contact Sheila or myself.

Barbara Ogilvie





# SUNDAY LUNCH & AGM SUNDAY APRIL 21

**PCAS ANNUAL GENERAL MEETING and LUNCH**  
at the **WELLINGTON OAK CANAL HEAD** near **POCKLINGTON**  
( A 1079 directly opposite Canal Head entrance. Ample parking. )

This is a friendly gathering for members and friends, in the Function Room (*entrance via the Bar*). Do come and join us. Friends are most welcome though only members may vote at the AGM afterwards. Details of the AGM appear on page 3.

**Lunch 12.30 for 1 pm**                      **AGM 2.15 pm approx.**

**Lunch:** *Choice of starters, Choice of roasts, fish, or vegetarian dish, with a variety of vegetables, Choice of sweets or cheeseboard, coffee and mints.* Cost:£8.50, juniors £5.50. Pay on the day but **we do need your bookings as soon as possible please!** Please ring Sheila Nix on **01904 623338**

Gifts for the Raffle or the Sales Stall are always welcome.

---

## DATES FOR YOUR DIARY

- Easter Monday    Vintage Tractor & Engine Rally , 10.30 - 5, Canal Head, with stalls, tombola etc, in aid of PCAS. Entrance free.
- " "    2 pm            IWA Jubilee Jigsaw Send-off by Pocklington Mayor.
- 3/4/5/6 May            Sowerby Bridge, Tuel Lane Re-opening Festival
- 18/19 May            \* Goole Gathering of Boats (IWA Jubilee Event)
- 25/26/27/ May    ★ Bank Holiday Boat Gathering at Melbourne, including
- Sun 27 May            Sunday Evening Evening Barbecue
- Mon 3 June , 8pm Members' Get - together , Melbourne Cross Keys
- Sat/Sun 8/9 June PCAS Stall at WRBC Wakefield Rally, Stanley Ferry
- Frid 21 June        ☆ IWA , Hull Guided Walk - Meet Hull Victoria Pier 7.30pm
- Mon 1 July            Members' Get-together 8pm
- Sat 13 July            PCAS Stall at Barmby Feast
- Sun 21 July          ☆ IWA Day Outing to Tuel Lane and area around
- Tues 23July        PCAS have Pocklington Market Charity Stall for day
- Sun 28 July        PCAS Stall at Hull Rainbow Festival, East Park, Hull.

Details: \* P.Waddington 01405 763985 ; ☆ Geoff Oxley 01482 658254

★ Gill Forth 01759 306791 ( otherwise S.Nix 01904 623338 )

**NB:** PCAS November Lunch 1996 : Sunday 24 November


---

**WORKING PARTY DATES**    PCAS Working Parties normally take place on the SECOND and LAST SUNDAYS of each month; 10 am start. New volunteers always very welcome Please contact Paul Waddington on 01757 638027 (home) or 01405 763985 (daytime, at Goole Boathouse) for details; or contact Society Secretary.

---

**○ FIRST MONDAYS**    The informal gatherings from 8pm in the Cross Keys at Melbourne on the first Monday of each month have proved quite popular, so we propose to continue for the summer, **but not on Bank Holidays!** See you there!

---

 **BARBECUE SUN MAY 27 MELBOURNE ARM 7.30 PM**  
**for Boat Crews, PCAS Members , & Friends DO COME!!**

---